

*Technical Services from the*



# Water Institute

## Contour Data Processing and Mapping Services

### What Services Do We Provide?

We process customer-collected data using specialized software to generate bathymetric maps of waterbodies. These accurate, geospatial models reveal the complex bathymetry and morphological characteristics of the waterbody and allow it to be graphically represented. Our staff also can use the resulting digital model to perform additional analysis. For example, a table of a waterbody's stage-volume relationship can be created for areas where LIDAR datasets are available. Waterbodies appropriate for this analysis include lakes and ponds, as well as navigable rivers, streams, and creeks. Training is available from our professional staff to ensure proper data collection.



### Who Can Benefit?

Government agencies, environmental consultants, and other organizations involved in waterbody management in Florida can use these geospatial models to make more informed resource decisions.

### Why Use Us for This Service?

Accurate modeling of a waterbody is a first, essential step in its effective assessment. Our data processing services are vital to resource managers with limited staff and budgets. By harnessing our expertise and equipment to obtain accurate bathymetric maps, morphological calculations, and stage-volume relationship tables, our partners can focus their efforts on management tasks and make better decisions regarding the protection and restoration of the water resources under their jurisdiction.

### Where is This Service Available?

Our bathymetry data processing service is available throughout the state of Florida.

### When Can This Service Be Performed?

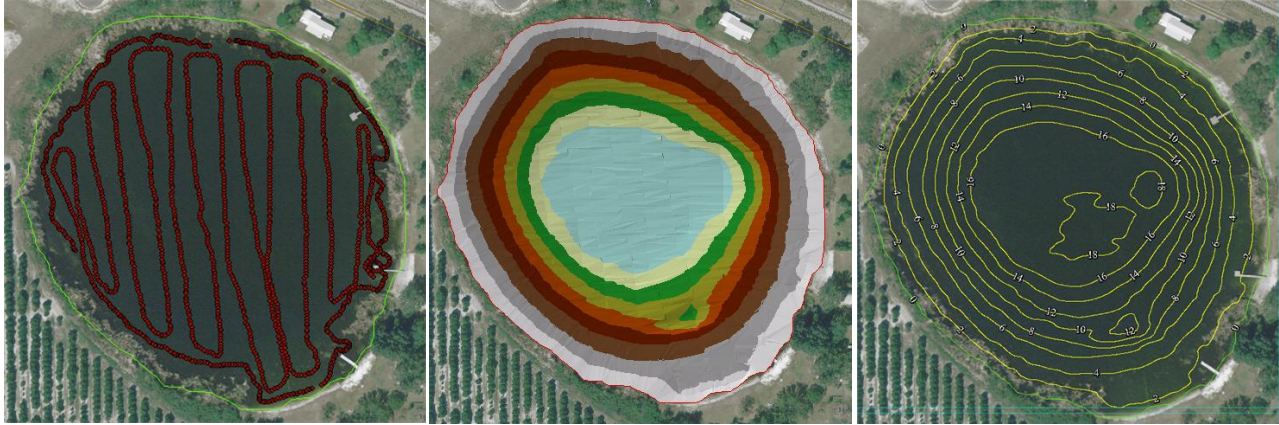
We process data year-round and can accommodate your schedule and budget with a custom-designed user agreement.



#### **For more information:**

USF Water Institute  
School of Geosciences  
College of Arts and Sciences  
4202 E. Fowler Avenue, NES107  
Tampa, FL 33620  
<http://waterinstitute.usf.edu/>

David Eilers, Field Scientist  
(813) 579-3368  
[eilers@usf.edu](mailto:eilers@usf.edu)



Bathymetry data collection transects



Triangulated Irregular Network (TIN) graph



Bathymetric contour map



**Lake Confusion**

Lake Center TRS  
30-27-27  
Latitude, Longitude  
28.110035, -81.650397

- Contour Lines  
Expressed in  
2-Foot Intervals
- Lake Perimeter  
Ground Level

**EXPLANATION:**  
Survey Date: April 13, 2010  
Lake water level was 126.79 (National Geodetic Vertical Datum 29), 125.88 (North American Vertical Datum 88) above vertical datum at the time of the assessment.  
Contours are expressed in absolute depth below this level.

**DATA SOURCES:**  
2007 aerial photography provided by the SWFWMD  
Lake perimeter digitized from SWFWMD 2007 aerial photographs.  
All contours generated by the Florida Center for Community Design and Research from survey data provided by the Polk County BoCC Natural Resources Division.

**LAKE MORPHOLOGY:**  
Perimeter: 2,977.75 ft;  
Area: 15.06 acres;  
Median Depth: 6.16 ft;  
Volume: 134.64 Acre-ft (43,872,285.46 gallons);  
Deepest point: 18.48 ft

**DISCLAIMER:**  
This map is for illustrative purposes only and should not be used for lake management.

**Lake Confusion**

Lake Center TRS  
30-27-27  
Latitude, Longitude  
28.110035, -81.650397

- Contour Lines  
Expressed in  
2-Foot Intervals
- Lake Perimeter  
Ground Level

**EXPLANATION:**  
Survey Date: April 13, 2010  
Lake water level was 126.79 (National Geodetic Vertical Datum 29), 125.88 (North American Vertical Datum 88) above vertical datum at the time of the assessment.  
Contours are expressed in absolute depth below this level.

**DATA SOURCES:**  
2007 aerial photography provided by the SWFWMD.  
Lake perimeter digitized from SWFWMD 2007 aerial photographs.  
All contours generated by the Florida Center for Community Design and Research from survey data provided by the Polk County BoCC Natural Resources Division.

**LAKE MORPHOLOGY:**  
Perimeter: 2,977.75 ft;  
Area: 15.06 acres;  
Median Depth: 6.16 ft;  
Volume: 134.64 Acre-ft (43,872,285.46 gallons);  
Deepest point: 18.48 ft

